

# Kestrel TSCM<sup>®</sup> Professional Software

## Mobile Monitoring and Analysis Platform (MMAP)<sup>™</sup>

June 2016

Technical Research and Standards Group (TRSG)

### Paul D Turner, TSS TSI

The complexity of the modern threat environment demands sophisticated collection tools that allow for scalability, versatility and mobility during deployment.

Our Technical Research and Standards Group (TRSG) has introduced one of the most advanced TSCM deployment platforms available, offering the essential elements of scalability, versatility and mobility.

MMAP is a high-technology, budget friendly spectrum surveillance platform, in keeping with the Kestrel<sup>®</sup> brand philosophy, of bringing powerful resources to market at a realistic price point.

As noted in the May 2016 newsletter.

*“The ability to deploy, capture, store, export, analyze, playback, and report, is the very foundation of Kestrel<sup>®</sup> Analytics, a modern standard in providing a very powerful analytical capability to corporate, government, and military technical operators”.*



The Kestrel Mobile Monitoring and Analysis Platform (MMAP)<sup>™</sup> is custom designed for dynamic mobile RF Remote Spectrum Surveillance and Monitoring (RSSM) assignments.

### MMAP | Kestrel Analytics<sup>™</sup>

Technical operators worldwide are seeing an increase in demand by both private and public sector organizations for a wide range of new Technical Surveillance Countermeasures (TSCM) services, oftentimes, involving challenging deployment methodology in response to public safety, terrorism, espionage, and organized crime.

MMAP provides the means to meet these new challenges with a deployable mobile solution for the collection, digital processing and advanced technical analysis of the ambient RF spectrum environment.

MMAP is an advanced mobile RF collection and surveillance platform, optimized for a wide range of Remote Spectrum Surveillance and Monitoring (RSSM) roles, where fixed spectrum surveillance may not be an effective alternative.

MMAP is ideal for large government sites with multiple structures, and a standing requirement for sustainable public access.

### MMAP | Deployment

Deployment capability includes Technical Surveillance Countermeasures (TSCM) assignments, Signals Intelligence (SIGINT) applications, Spectrum Management and Regulatory Compliance, Law Enforcement, EOD, Tactical Deployment, and a wide range of technical support for organized Protective Operations.

### MMAP | Covert Deployment

All collection antennas and tactical sensors are not visible to the casual observer, unlike other mobile platforms that utilize visible roof top antenna arrays.

The ability to deploy a low profile collection platform significantly enhances the timely detection and identification of potentially hostile signal events.

### MMAP | Kestrel TSCM<sup>®</sup> Professional Software

The MMAP vehicle is powered by the Kestrel TSCM<sup>®</sup> Professional Software | Signal Intelligence Support System (SISS)<sup>™</sup> for operator attended and unattended collection and analysis of the ambient RF spectrum environment.

MMAP can be custom configured across multiple search receivers and analyzers for automated collection up to 43 GHz, and IFBW configurations of up to 160 MHz depending on the search receiver or analyzer deployed.

# Kestrel TSCM<sup>®</sup> Professional Software

## Kestrel Analytics<sup>™</sup> | Tomorrows Capability—Today!

Professional Development TSCM Group Inc.

Technical Security Branch (TSB)

### Communication | Mobile Broadband

MMAP includes robust high speed 4G | LTE Mobile Broadband connectivity, permitting remote network communication capability.

### MMAP | Kestrel Central Visualizer (KCV)<sup>™</sup>

The ability to deploy and dynamically manage any number of remote mobile and / or fixed collection stations is fully supported, utilizing the optional Kestrel Central Visualizer (KCV)<sup>™</sup> module, providing a powerful managed Remote Command and Control (RCC) point.

The Kestrel TSCM<sup>®</sup> Automated Export Control (AEC)<sup>™</sup> module, supports the ability to automate the export of programmable data reference parameters, and provides a fail-safe collection environmental library of Spectra, RSSI, IQ Recording, Minimum Detection Amplitude (MDA) Automatic Signal Lists, and Dynamic Alert Annunciator (DAA) based Exceedance and Loss alerts.

### MMAP | Session Report Generator (SRG)<sup>™</sup>

The ability of MMAP to generate multiple real-time dynamic runtime session reports, as well as post collection report processing, brings seemingly separate data sources into the analytical spotlight for the experienced technical analyst.

### MMAP | Operator Training and Certification

Operator training and certification is an essential component of the MMAP package and includes advanced training on the operation of the MMAP vehicle deployment, Kestrel TSCM<sup>®</sup> Professional Software and Kestrel Central Visualizer (KCV)<sup>™</sup>.

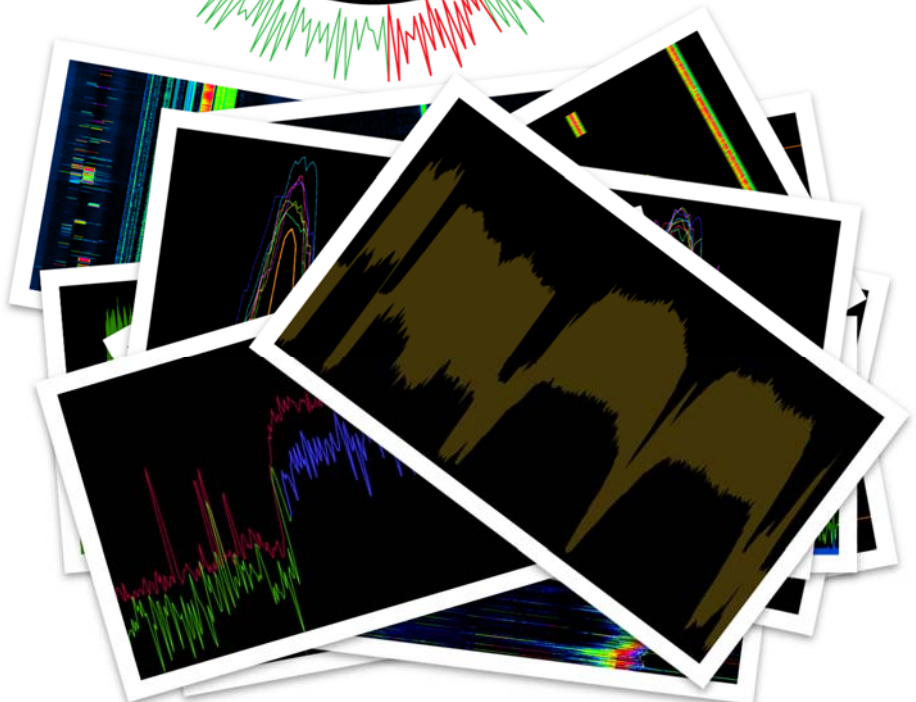
Each vehicle is custom configured with client selected Software Defined Radio (SDR) hardware, supported by the Kestrel TSCM<sup>®</sup> Professional Software, and includes the appropriate level of operator training on the client selected hardware.

MMAP is new industry disruptive technology, bringing new capability in the face of elevated threat levels worldwide.

To learn more about our Mobile Monitoring and Analysis Platform (MMAP)<sup>™</sup>, please contact [Paul D Turner](#), TSS TSI at Professional Development TSCM Group Inc.

| [www.pdtg.ca](http://www.pdtg.ca) | [www.kestreltscm.com](http://www.kestreltscm.com) | [www.ctsc-canada.com](http://www.ctsc-canada.com) |

### *Innovation is Simply the Beginning*



*Kestrel TSCM<sup>®</sup> Professional Software is innovative industry leading, disruptive technology, now sold in 24 countries worldwide.*